

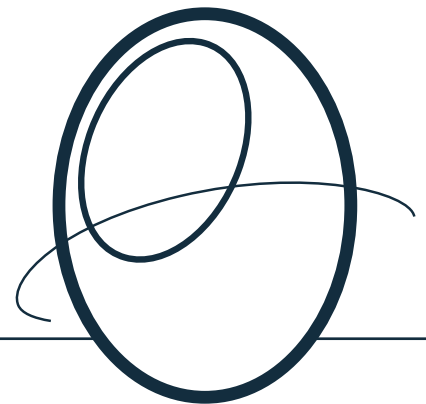
# Training Solutions //

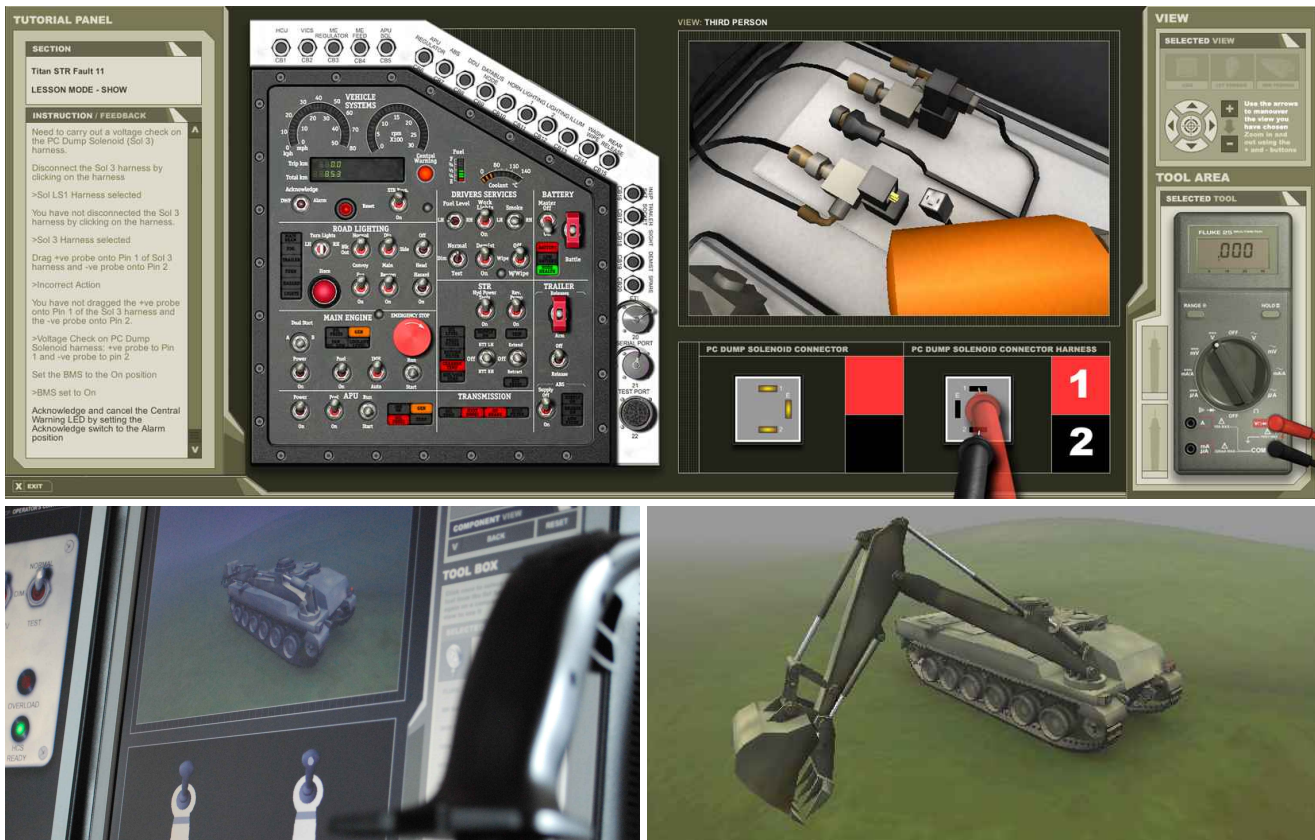
## E-learning, Inductions and Presentations

Train and develop, engage and communicate, build knowledge and confidence

Informative, instructional and experiential learning delivered onscreen provides consistent, timely and cost effective training for staff. Desktop simulations provide immersive training for complex products or systems, allowing users to be fully trained before they use prime equipment. Induction training provides organisational information, using infographics to make it memorable, attractive and engaging. Bespoke solutions result in higher retention, better performance and less waste.

[www.thumbdigital.com](http://www.thumbdigital.com)





ABOVE // Screenshots from ETS training for BAE Systems @thumb

## 01// PC Based Immersive Training

### Creating experiential training to ensure end user competence

Client // BAE Systems (Land Systems)  
 Brief // to provide experiential training for operation and fault finding

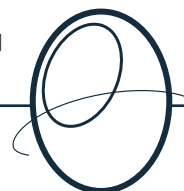
Desktop simulations provide immersive training for complex products or systems, allowing users to be fully trained before they use prime equipment. Informative, instructional and experiential learning delivered onscreen provides consistent, timely and cost effective training for staff. This training style is ideal when access to the prime equipment is likely to be limited for trainees or if mistakes are potentially costly to both personnel and equipment. Featuring real time 3D vehicles, panels and controls, this cutting edge system provides a synthetic environment where users undertake tasks to build confidence and competencies. Realistic responses, full feedback and a mix of learning styles suits the needs of a wide range of trainees. It is deployable within an optional Learning Management System on standard PCs for flexibility and cost effectiveness.

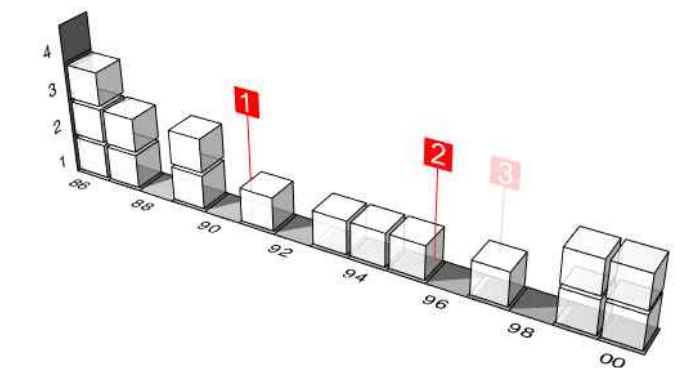
#### Features //

- Sub-system simulator
- Experiential training
- 3D Synthetic environment
- Standalone or LMS
- Database driven
- Different training modes
- Modular
- PC based

#### Benefits //

- Develop competencies before contact with the prime equipment
- Appropriate for learning style of trainee
- Accurate feedback
- Measures trainee progress when integrated with an LMS
- Timely update and adaptation
- May be used to train and test
- Easy to expand
- Relatively low hardware cost with off site/distance learning training potential





ABOVE // Screenshots and animated infographics from 3M Aycliffe Plant Induction @thumb

## 02// Site Induction

### Enabling new staff to find out essential site information

Client // 3M

Brief // to create an integrated presentation which incorporates information from diverse sources providing an effective induction experience

Consistent, timely, reliable induction training assists in familiarisation and settling in new staff joining an organisation and encourages productivity at the earliest stage. Taking organisational specific information, we present it in an accessible form. 3D visualisation makes it attractive and engaging, yet cost effective to keep up to date; these inductions help organisations meet their statutory requirements for health and safety information.

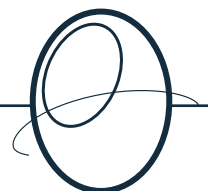
This bespoke induction presentation for one of 3M's UK manufacturing facilities provides consistent, timely training for all staff. Delivered to either groups or individuals, it engages new staff through a mixture of 3D visualisations, illustration and photography. Staff retention has increased, comprehension improved and it has reduced training time by 50%. Its use supported the achievement of 'Best Factory' in Management Today's Best Factory Awards.

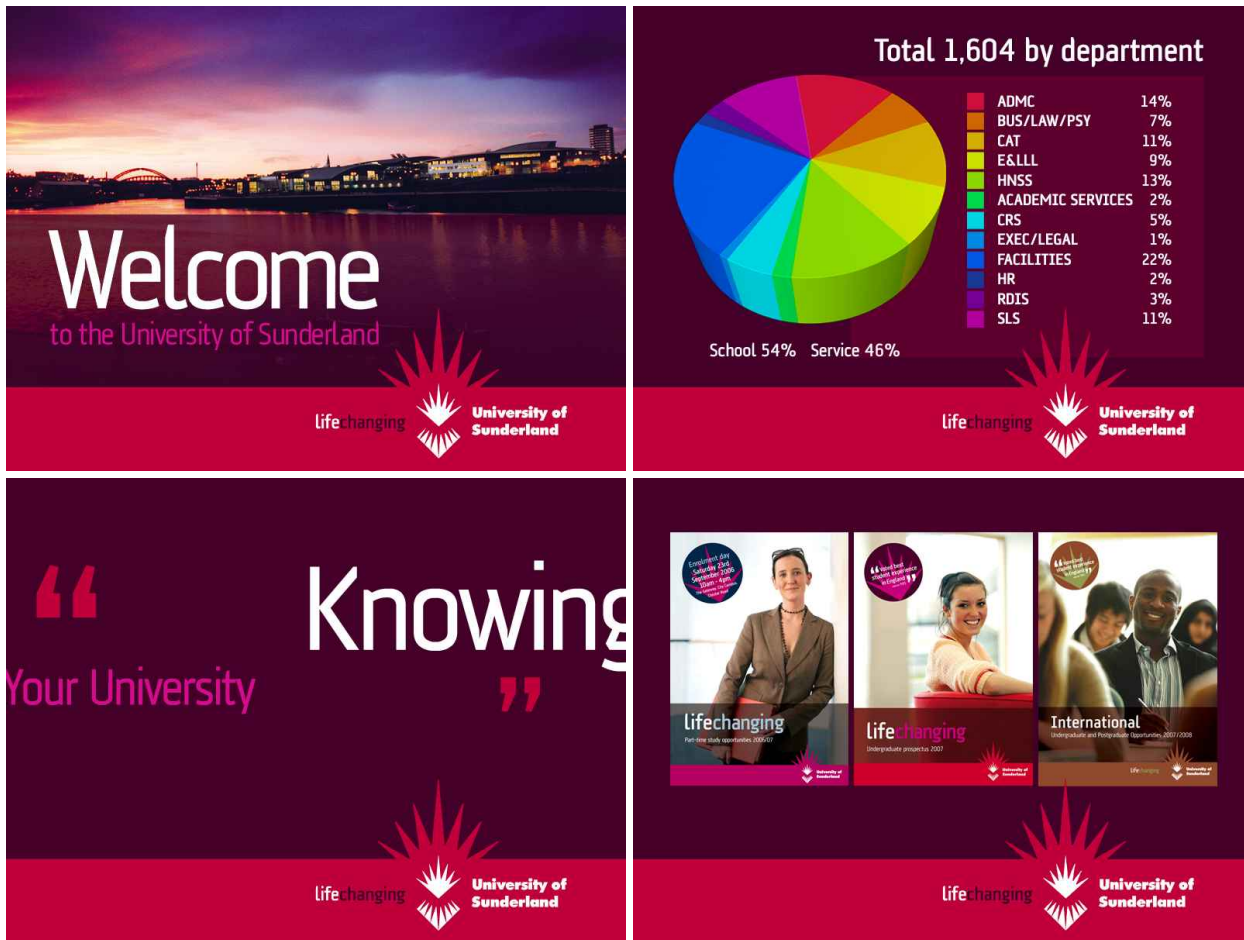
#### Features //

- Visually engaging and can include 3D virtual tours
- Rapid delivery method
- Intelligent use of infographics to convey complex information
- Optionally integrated with a learning management system
- Supports the brand values of the organisation
- Group delivered or used for self-study

#### Benefits //

- Memorable, and so aid better retention of information
- Rapid delivery means that critical messages can be distilled
- Infographics improve audience comprehension
- User progress can be tracked for audit and training purposes
- New staff make faster links to their new employer.
- Deliverable when needed, ensuring new staff are given the appropriate introduction and training at the moment they start.





ABOVE // Screenshots from University of Sunderland Staff Induction animated presentation ©thumb

## 03// Staff Induction

### Creating the right first impression for new staff

**Client //** University of Sunderland  
**Brief //** to create an engaging presentation for all new staff, ensuring that a wealth of complex information could be assimilated

Information is essential for site visitors and new staff to guide and inform, protecting their safety and that of others on site. Bespoke to meet the needs of clients, it typically includes emergency and housekeeping information, as well as wayfinding and general organisational communications.

This presentation required the combination of infographics and existing material to convey complex information in the context of new employment. We ensured that we supported the brand values of the organisation to help new staff to make faster links to their new employer

#### Features //

- Visually engaging, messages are easily remembered and consequently acted upon
- Easily adaptable to meet the needs of individual organisations
- Can be produced on both CD and DVD for distribution prior to site visits

#### Benefits //

- Highly effective way to communicate crucial messages to visitors and contractors
- Cost effective, efficient visitor information
- Recipients can be made aware of requirements prior to visits, saving time and increasing safety levels on site

